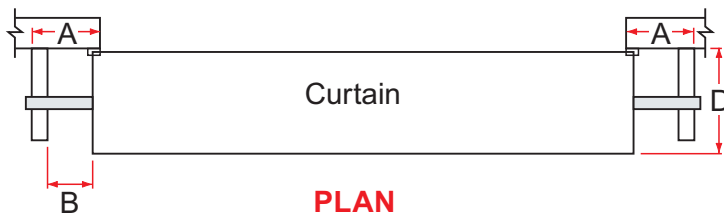
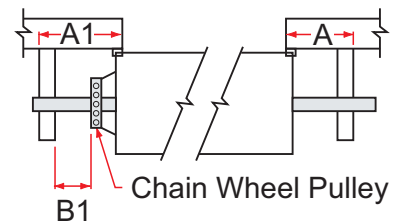


## Series B Semi-Industrial Roller Doors

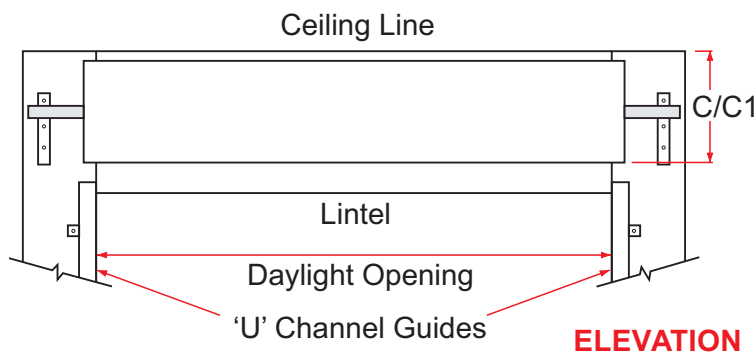
**Note:** With ongoing product developments, the manufacturer retains the right to change products and specifications without prior notification. If a specification is critical to the end use, please discuss with your Dominator Dealer first. Illustrations are not accurate representations of product, and are for illustrative purposes only. All measurements should be made by your Dominator Dealer for clarification.



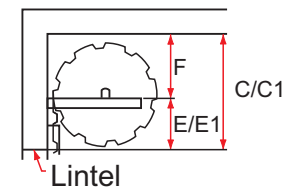
**PLAN**



**CHAIN WHEEL DOORS**



**ELEVATION**



**END VIEW**

### REBATE DETAIL - STD GUIDES

100mm Past Opening  
120mm Inside Building

### DIMENSIONS

- A1\*** Denotes sideroom required for installation of an opener when mounted on the door bracket. GDO-10/GDO-6
- B** Denotes non geared end of curtain
- B1** Denotes geared end of curtain
- C1 & E1** Denotes restricted headroom installation requirements
- C & E** Is recommended.

All measurements are in millimetres and are minimum unless otherwise shown.

HEIGHT	A	A1	A1*	B	B1	C	C1	D	E	E1	F	OPERATION
UP TO 2400	135	125	235/110	35	N/A	540	475	555	245	180	295	Hand Operated
2401 - 3300	195	225	235/110	35	5	620	555	565	310	245	310	Direct Drive

**Note:** Installations with only minimal clearances may incur additional costs. Consult your Dealer.