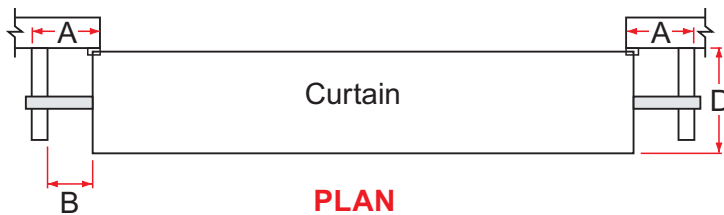
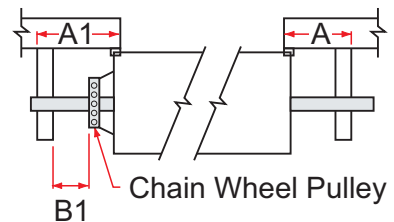


## Series C Industrial Roller Doors

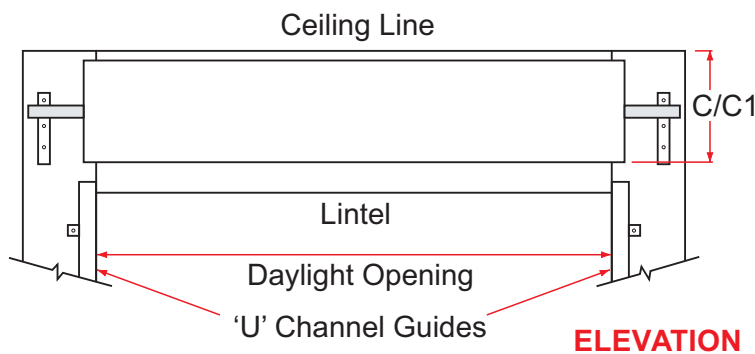
**Note:** With ongoing product developments, the manufacturer retains the right to change products and specifications without prior notification. If a specification is critical to the end use, please discuss with your Dominator Dealer first. Illustrations are not accurate representations of product, and are for illustrative purposes only. All measurements should be made by your Dominator Dealer for clarification.



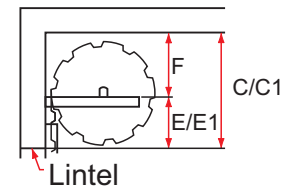
**PLAN**



**CHAIN WHEEL DOORS**



**ELEVATION**



**END VIEW**

**REBATE DETAIL - STD GUIDES**

100mm Past Opening  
120mm Inside Building

### DIMENSIONS

- A1\*** Denotes sideroom required for installation of a GDO-10 opener when mounted on the door bracket.
- B** Denotes non geared end of curtain
- B1** Denotes geared end of curtain
- C1 & E1** Denotes restricted headroom installation requirements
- C & E** Is recommended.

All measurements are in millimetres and are minimum unless otherwise shown.

HEIGHT	A	A1	A1*	B	B1	C	C1	D	E	E1	F	OPERATION
UP TO 2400	135	125	235	35	N/A	540	475	555	245	180	295	Hand Operated
2401 - 2700	135	135	235	35	5	620	555	565	310	245	310	Direct Drive
2701 - 3000	175	205	235	35	5	620	555	565	310	245	310	Direct Drive
3001 - 3300	195	225	235	35	5	620	555	565	310	245	310	Planetary Gear
3301 - 4200	195	225	235	35	5	620	555	585	310	245	310	Planetary Gear
4201 - 5000	210	225	235	35	5	635	590	615	310	245	325	Planetary Gear

**Note:** Installations with only minimal clearances may incur additional costs. Consult your Dealer.